

6800 SECURITY GATEWAY



Check Point's 6800 Next Generation Firewall offers a fully integrated, unified solution tuned to deliver maximum security against 5th generation threats without compromising performance. 6800 Security Gateway provides the most advanced threat prevention security for demanding enterprise networks.



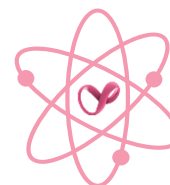
Gen V Dexterity

AI Driven
Threat Prevention



Augmented SSL Inspection

Powerful Gateways to Manage
Encrypted Traffic Inspection



Bonded with Infinity Architecture

More than just
Network Security

PERFORMANCE HIGHLIGHTS

Gen II Security: Firewall	Gen III Security: NGFW ¹	Gen V Security: Threat Prevention + SandBlast ²
42 Gbps	15 Gbps	8.9 Gbps

Performance measured with an enterprise testing conditions. Additional performance details on page 4. 1: Includes Firewall, Application Control, and IPS. 2: Includes Firewall, Application Control, URL Filtering, IPS, Antivirus, Anti-Bot and SandBlast Zero-Day Protection.

WELCOME TO THE FUTURE OF CYBER SECURITY

6800

Enterprise-grade security, performance and reliability

The Check Point 6800 Next Generation Security Gateway combines the most comprehensive security protections to safeguard your mid-size enterprise.

The 6800 is a 1U Next Generation Security Gateway with two I/O expansion slots for higher port capacity, redundant fans, redundant AC or DC power supply options, a 2 x 1TB (HDD) or 2x 480GB (SSD) drive array option, and Lights-Out Management (LOM) for remote management. This powerful Next Generation Security Gateway is optimized to deliver the most advanced threat prevention to secure your critical assets and environments.

Key Features & Benefits

Advanced Threat Prevention	1 st time prevention of known and zero-day threats
Uncompromising Performance	Achieve up to 8.9 Gbps of threat prevention throughput
Secure Encrypted Traffic	Consolidate SSL inspection into one integrated security platform



THE CYBER SECURITY ARCHITECTURE OF THE FUTURE

Enterprise Security Gateways

ONE SECURITY PLATFORM

Leveraging unified threat
intelligence
and open interfaces

REAL-TIME THREAT PREVENTION

Blocking the most
sophisticated attacks before
they infiltrate the network

CONSOLIDATED MANAGEMENT

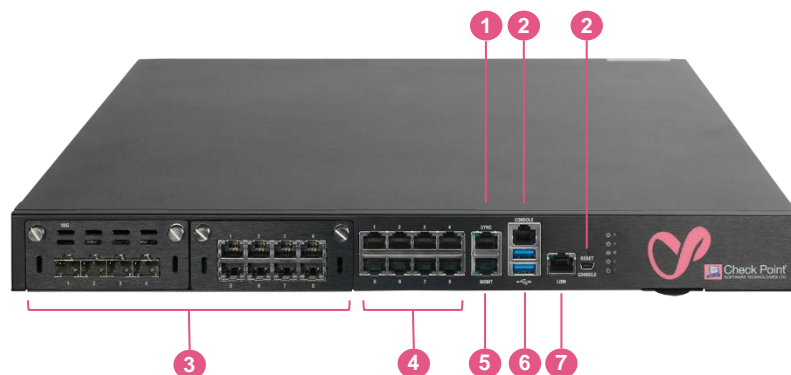
Single management,
modular policy management
and integrated threat
visibility

WELCOME TO THE FUTURE OF CYBER SECURITY

SPOTLIGHT

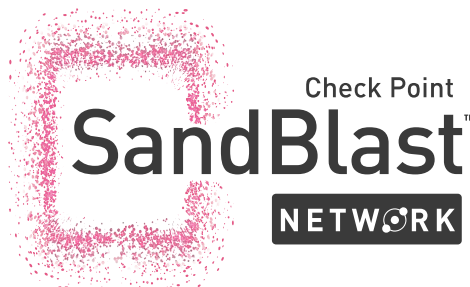
6800 SECURITY GATEWAY

- 1 Sync 10/100/1000Base-T RJ45 port
- 2 RJ45/micro USB console port
- 3 Two network card expansion slots
- 4 8x 10/100/1000Base-T RJ45 ports
- 5 Management 10/100/1000Base-T RJ45 port
- 6 2x USB 3.0 ports for ISO installation
- 7 Lights-Out Management port



Prevent Known and Zero-day Threats

Zero-day protection offering network security with evasion-resistant malware detection and complete protection from the most advanced attacks, ensuring quick delivery of safe content to users.

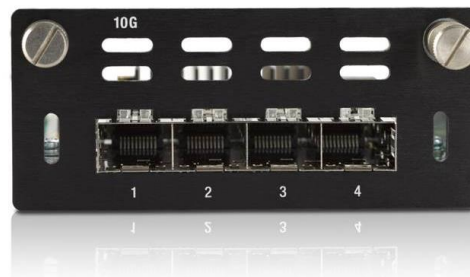


All-inclusive Security Solutions

Every 6800 Security Gateway includes comprehensive Next Generation Threat Prevention in one of two hardware configurations; a base or a fully redundant, high performance option.

Redundant, High Performance Option

Purchase the affordable Plus package and get a base system plus a 4x 10Gb SFP+ interface card, transceivers, redundant AC power supplies, 2x 480GB (SSD) drives and 32 GB of memory for high connection capacity.



Remote Management and Monitoring

A Lights-Out Management (LOM) card provides out-of-band remote management to remotely diagnose, start, restart and manage the appliance from a remote location. Also use LOM for remote installs of the GAiA OS.

ENTERPRISE-GRADE PLATFORM

		1 GbE (copper)	1 GbE (fiber)	10 GbE	Memory	Redundant Storage	Redundant Power	LOM
6800	Base	10	0	0	16 GB	○	○	●
	Plus	10	0	4	32 GB	●	●	●
	Max	26	8	8	64 GB	●	●	●

○ this is optional

WELCOME TO THE FUTURE OF CYBER SECURITY

Performance

Enterprise Testing Conditions

- 8.9 Gbps of Threat Prevention¹
- 15 Gbps of NGFW²
- 20 Gbps IPS
- 42 Gbps of firewall throughput

Ideal Testing Conditions

- 50 Gbps of UDP 1518 byte packet firewall throughput
- 10.4 Gbps of AES-128 VPN throughput
- 300,000 connections per second, 64 byte response
- 3.9/8/16M concurrent connections, 64 byte response³

1: Includes Firewall, Application Control, URL Filtering, IPS, Antivirus, Anti-Bot and SandBlast

Zero-Day Protection with R80.20. 2: Includes Firewall, Application Control and IPS with R80.20.

3: Performance measured with Base/Plus/Max memory with R80.20.

Additional Features

Highlights

- 1x CPU, 10x physical cores, 20x virtual cores (total)
- 1x 1TB HDD or 480GB SSD storage (2x RAID1 option)
- 1 AC or DC power supply (2 redundant PSU option)
- 16, 32 and 64 GB memory options
- Lights-Out Management card is Included
- Virtual Systems (Base/Plus/Max mem): 20/20/30

Network Expansion Slot Options (2 of 2 slots open)

- 8x 10/100/1000Base-T RJ45 port card, up to 26 ports
- 4x 1000Base-F SFP port card, up to 8 ports
- 4x 10GBase-F SFP+ port card, up to 8 ports

Content Security

First Time Prevention Capabilities

- CPU-level, OS-level and static file analysis
- File disarm and reconstruction via Threat Extraction
- Average emulation time for unknown files that require full sandbox evaluation is under 100 seconds
- Maximal file size for Emulation is 100 MB
- Emulation OS Support: Windows XP, 7, 8.1, 10

Applications

- Use 8,000+ pre-defined or customize your own applications
- Accept, prevent, schedule, and apply traffic-shaping

Data Loss Prevention

- Classify 700+ pre-defined data types
- End user and data owner incident handling

Content Security (continued)

Dynamic User-based Policy

- Integrates with Microsoft AD, LDAP, RADIUS, Cisco pxGrid, Terminal Servers and with 3rd parties via a Web API
- Enforce consistent policy for local and remote users on Windows, macOS, Linux, Android and Apple iOS platforms

Network

Network Connectivity

- Total physical and virtual (VLAN) interfaces per appliance: 1024/4096 (single gateway/with virtual systems)
- 802.3ad passive and active link aggregation
- Layer 2 (transparent) and Layer 3 (routing) mode

High Availability

- Active/Active and Active/Passive – Layer 3 mode
- Session failover for routing change, device and link failure
- ClusterXL or VRRP

IPv6

- NAT66, NAT64, NAT46
- CoreXL, SecureXL, VRRPv3

Unicast and Multicast Routing (see sk98226)

- OSPFv2 and v3, BGP, RIP
- Static routes, Multicast routes
- Policy-based routing
- PIM-SM, PIM-SSM, PIM-DM, IGMP v2 and v3

Physical

Power Requirements

- Single Power Supply rating: 500W
- AC power input: 100 to 240V (47-63Hz)
- Power consumption max: 160.1W
- Maximum thermal output: 546.19 BTU/hr.

Dimensions

- Enclosure: 1RU
- Dimensions (WxDxH): 17.24 x 20 x 1.73 in. (438 x 508 x 44mm)
- Weight: 22.05 lbs. (10 kg)

Environmental Conditions

- Operating: 0° to 40°C, humidity 5% to 95%
- Storage: -20° to 70°C, humidity 5% to 95% at 60°C

Certifications

- Safety: UL, CB, CE, TUV GS
- Emissions: FCC, IC, CE, VCCI, RCM/C-Tick
- Environmental: RoHS, WEEE, REACH¹, ISO14001¹

¹. factory certificate

WELCOME TO THE FUTURE OF CYBER SECURITY

ORDERING 6800 SECURITY GATEWAYS

BASE CONFIGURATION ¹	SKU
6800 Base configuration: 10x 1GbE copper ports, 16GB RAM, 1x 1TB HDD, 1x AC PSU, Lights-Out Management (LOM), NGTP Security Subscription for 1 Year, Local/Standalone Management for 2 Gateways	CPAP-SG6800
6800 Plus configuration: 10x 1GbE copper ports, 4x 10GbE SFP+ ports, 4x SR transceivers, 32GB RAM, 2x 480GB SSD, 2x AC PSUs, Lights-Out Management (LOM), NGTP Security Subscription for 1 Year	CPAP-SG6800-PLUS
SANDBLAST ZERO-DAY THREAT PROTECTION ¹	SKU
Upgrade from NGTP to SandBlast (NGTX) in the 1 st year, i.e. when purchasing CPAP-SG6800	CPSB-UPG-6800-NGTX-1Y
Upgrade from NGTP to SandBlast (NGTX) in the 1 st year, i.e. when purchasing CPAP-SG6800-PLUS	CPSB-UPG-6800-PLUS-NGTX-1Y

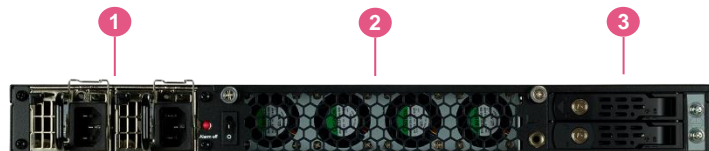
¹ Virtual System extensions plus 1, 2, and 3 year renewals for NGTP, NGTX, NGFW, IPS and DLP are available in the online product catalog. The Base option will be available Q2 2019.

Accessories

INTERFACE CARDS AND TRANSCEIVERS	
8 Port 10/100/1000 Base-T RJ45 interface card	CPAC-8-1C-C
4 Port 1000Base-F SFP interface card; requires additional 1000Base SFP transceivers	CPAC-4-1F-C
SFP transceiver module for 1G fiber ports - long range (1000Base-LX)	CPAC-TR-1LX-C
SFP transceiver module for 1G fiber ports - short range (1000Base-SX)	CPAC-TR-1SX-C
SFP transceiver to 1000 Base-T RJ45 (Copper)	CPAC-TR-1T-C
4 Port 10GBase-F SFP+ interface card	CPAC-4-10F-6500/6800-C
SFP+ transceiver module for 10G fiber ports - long range (10GBase-LR)	CPAC-TR-10LR-C
SFP+ transceiver module for 10G fiber ports - short range (10GBase-SR)	CPAC-TR-10SR-C
MEMORY	SKU
Memory upgrade kit from 16GB to 32GB for 6800 Security Gateways	CPAC-RAM16GB-6800
Memory upgrade kit from 16GB to 64GB for 6800 Security Gateways	CPAC-RAM48GB-6800
Memory upgrade kit from 32GB to 64GB for 6800 Security Gateways	CPAC-RAM32GB-6800
SPARES AND MISCELLANEOUS	SKU
Additional/Replacement 1TB HDD for 6800 Security Gateways	CPAC-HDD-1TB-6800
480GB SSD for 6800 Security Gateways	CPAC-SSD-480G-6800
Additional/Replacement AC Power Supply for 6800 Security Gateways	CPAC-PSU-AC-6800
Additional/Replacement DC power supply unit for 6800 Security Gateways	CPAC-PSU-DC-6800
Replacement Lights-Out Management Module	CPAC-LOM-6500/6800-C
Slide rails for 6000 Security Gateways (22" - 32")	CPAC-RAILS-6000
Extended slide rails for 6000 Security Gateways (24" - 36")	CPAC-RAILS-EXT-6000

6800 SECURITY GATEWAY

- ① Redundant AC or DC power supplies
- ② Cooling fans
- ③ Redundant SSD or HDD RAID1 storage



CONTACT US

 EMAIL: INFO@CHECKPOINT.COM

 WEB: WWW.CHECKPOINT.COM